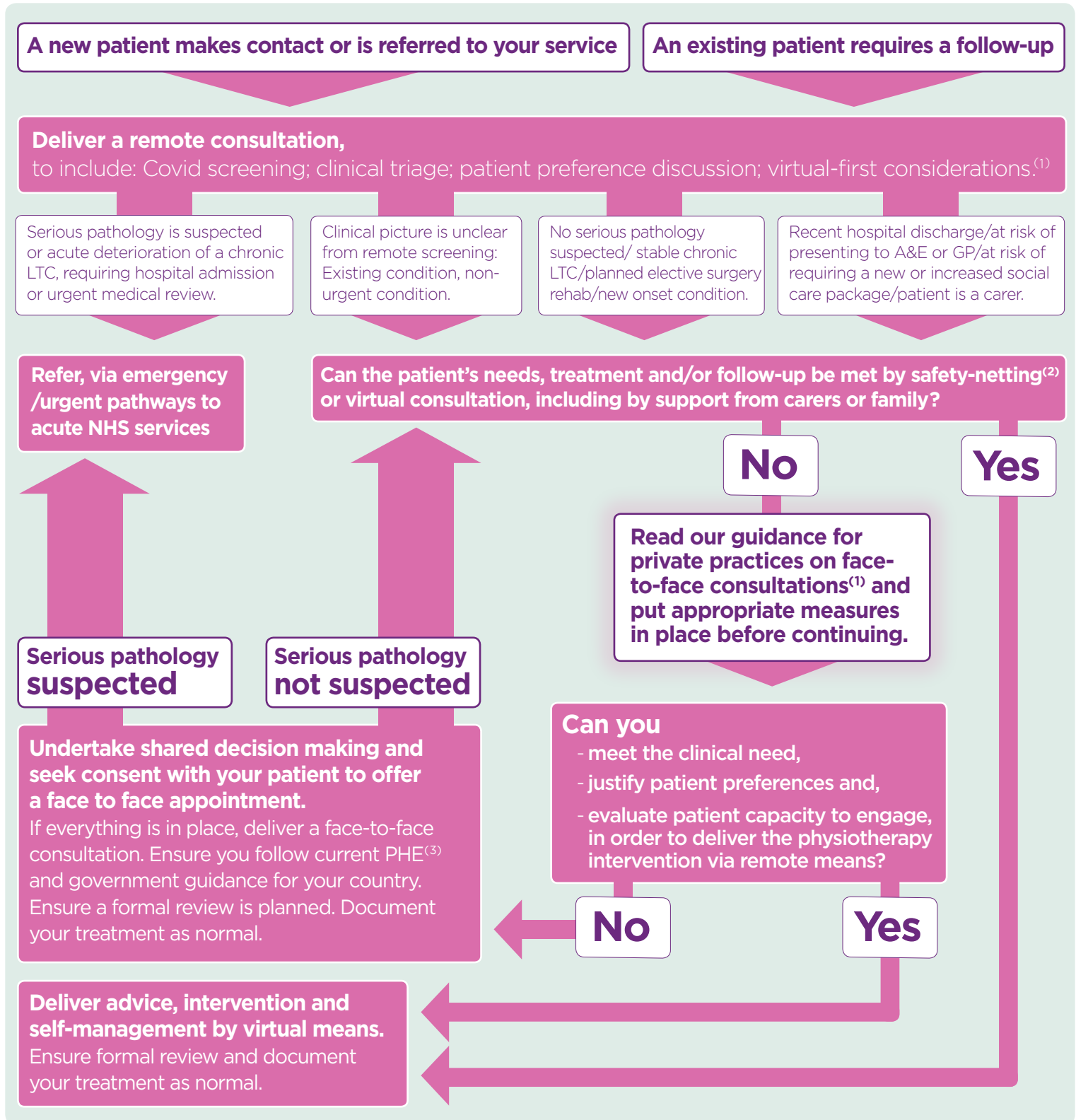


COVID-19

How to decide if face-to-face consultations are appropriate – England only

Correct as of 12 May 2020



References

- <https://www.csp.org.uk/news/coronavirus/clinical-guidance/face-face-or-remote-consultations/guidance-england>
- <https://www.sciencedirect.com/science/article/pii/S2468781220303131>
- <https://www.gov.uk/government/publications/wuhan-novel-coronavirus-infection-prevention-and-control>